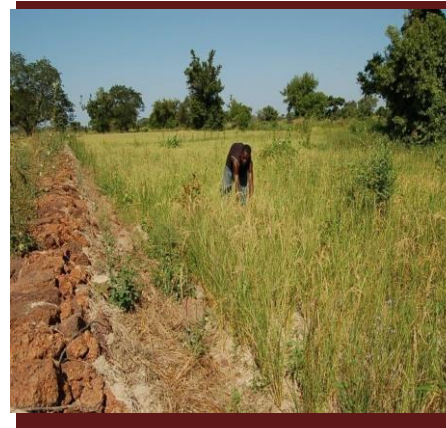




Perspectives on best practice in the SAWAP region :

Documented best practice and their scaling up



www.sawap.net

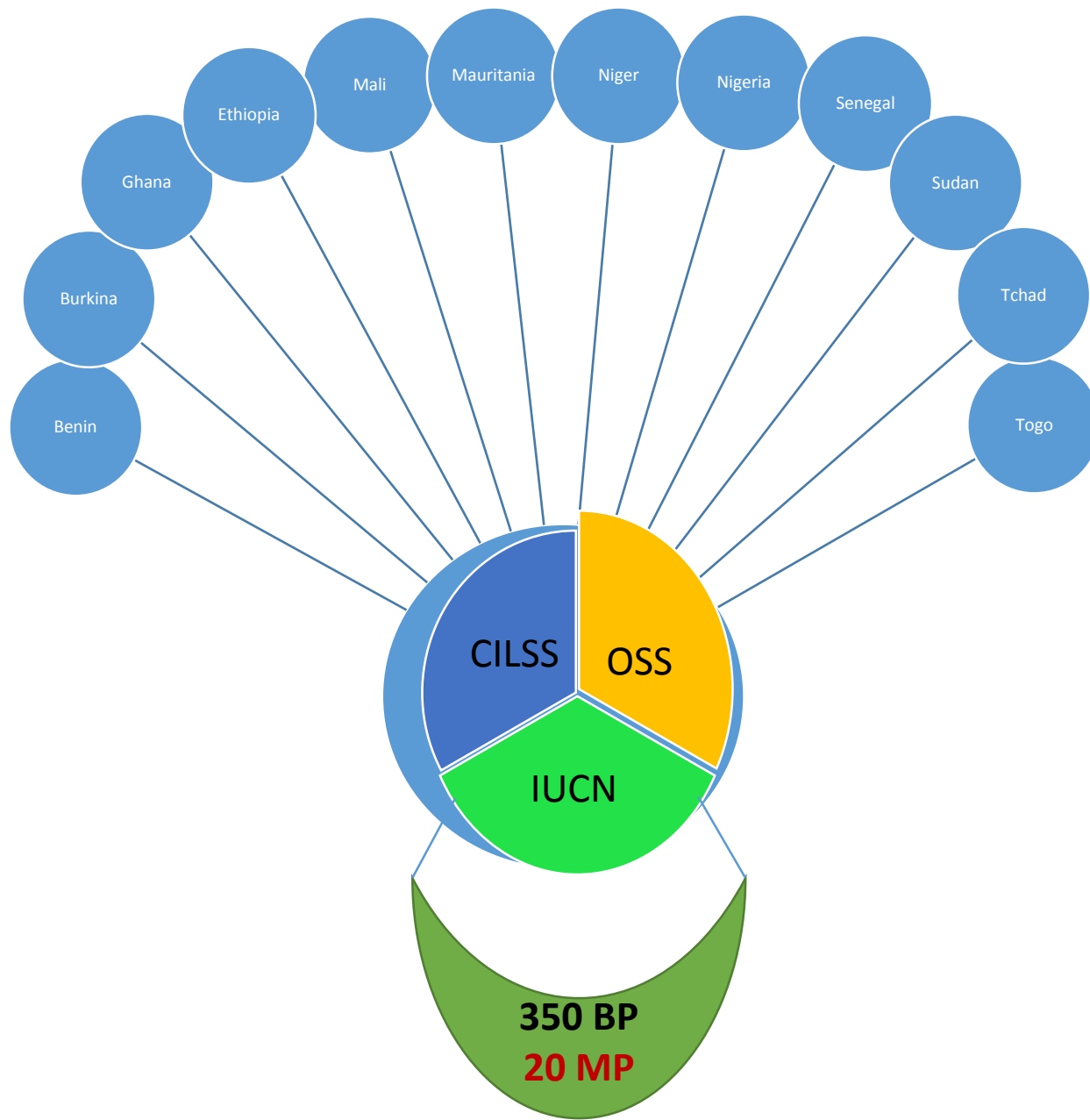
Dr Sibiri Jean OUEDRAOGO
CILSS/INSAH



**DOCUMENTATION
OF IDENTIFIED
BEST PRACTICES
FROM LOCAL TO
NATIONAL LEVELS
IN 12 COUNTRIES**

- Identification
- Documentation
- Categorization
- Validation
- Prioritization
- **Scaling up ?**





+Driving Principles and description

Documentation of practices

- technical and technological acquisitions,
- techniques and methodologies,
- local know-how used by players.

Main points: sustainability, effectiveness, needs of Decision-makers, players and beneficiaries.

27 points summary sheets :

- identification and categorization;
- Description of practice;
- Analysis of biophysical and climatic conditions and their use;
- Modalities and obstacles to success and their performance;
- Contribution of practical to stabilization or improvement in soil productivity and diversity;
- Promoters of technology or technique;
- **Pratical advises for the implementation,...**



Inventoried practices by country and by domain

Nature of the Best practice	Benin	Togo	Ghana	Nigeria	Burkina Faso	Mali	Niger	Senegal	Mauritania	Chad	Ethiopia	Sudan	Total
CES	2	7	14		8	9	7	13	12	1	6	3	82
Cultural	1	7	4	1	3	2	1	1		2			22
Fertilization	2	7	2	1	5	5	3	3	4	5			37
Forestry / agro	1	7	2	1	9	5	6	9	1	2		1	44
SLM		3	9		8	9	2	3					34
Water Management	1	7	4	1	6	0	1			1	1	1	23
Rehabilitation		3	5	1	10	3	12	7	15	8			64
Organizational		4	4		11	0	5	9	0	8	3		44
Total	7	45	44	5	60	33	37	45	32	27	10	5	350



Deliberate choice of 20 best practices

Make a shortlist to initiate
a Best Practice scaling
process

How to choose these best
20 at this stage?

Selection of 20 best practice files out of 8 thematic domains in 3 stages:

- Stage 1: Share the 10 BP selected by each SAWAP country (validation workshop from 12 to 13 July 2016)
- Stage 2: Note the BP selected on the whole by the countries based on the following criteria:
 - (i) innovative character,
 - (ii) inter country nature,
 - (iii) ability to be replicated,
 - (iv) and multiple impacts/sustainability.
- Stage 3: Classify and retain the 20 best for dissemination: beginning of scaling.





Expectation of
sponsors, political
decision-makers,
technicians and
producers:

■ WORKING TOWARDS SCALING UP



+ Sharing and dissemination best practices: information flow, training and interactions

Actors

Varied Audience

1. Political decision makers
2. Farmer organizations,
3. Individuals and Agents of spread
4. Technical and financial partners
5. Researchers, ...

Different strategies relative to the targeted public

- **For interaction/dialogue/information**
 - Fairs and skills,
 - Social networks and community practice,
 - websites, vidéos,
 - News,
 - Education cards/dissemination,
 - Open doors,
 - Exchange visits,
 - School environments...



+ STRATEGY ?

- Selection of potential implementation partners (PIP), experiences and dominant capabilities
- Evaluation of capacity strengthening needs - training
- Community practices fora via a platform such as: SLM, biodiversity
- Best practices market for the promotion of best practices (WAAPP experiences)
- Training of trainers to accelerate dissemination and improve and adapt to service demanders
- Module harmonization to simplify common understanding for the local level
- Evaluation and monitoring of module use for continued improvement





PERSPECTIVES

Relevant additional information

Additional information

- BP technical itinerary in the production system
- Return on investment
- AIC contribution
- Site status of each BP: school case to increase pedagogical documents, inter-peasant farmer visits, school farms
- Strengthening initial investment capacity
- Go on to calculate ratios :
 - Rate of return on investment;
 - Number of additional persons fed ;
 - Number of additional UBT fed;
 - Savings on import bill;
 - Gains made on GIP per inhabitant.





PERSPECTIVES

Instrument support and advice to decision making

Accompaniments to investment

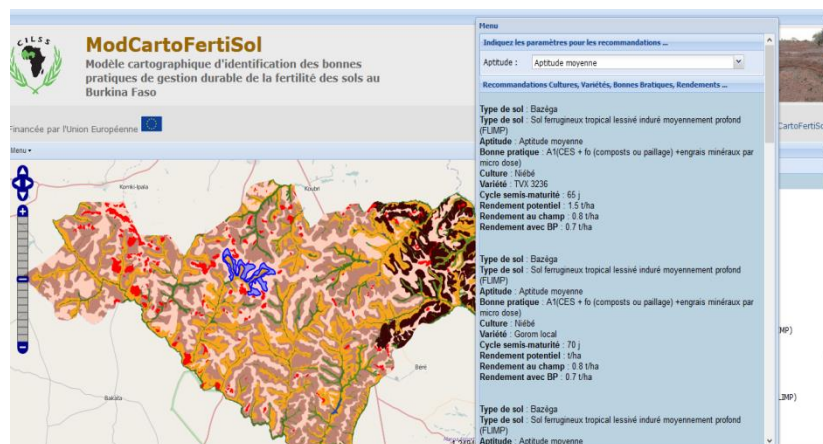
Best practices for resilience: human being issues, a case of « wealth » (AGIR/jade production,2016)

Notables, landowners, privileged persons support, necessary consideration of the most vulnerable

Often excluded from the source of information

Forging the scaling up

- Model agricultural advice to organize technical and production services, agribusiness, level of education, decision makers, ...



- Strengthening of initial investment capacity: catalytic, small projects, taking into account the poorest, gender.





THANK YOU FOR
ATTENTION

